



**REGIONAL SPECIALISED METEOROLOGICAL CENTRE-TROPICAL CYCLONES, NEW DELHI  
TROPICAL WEATHER OUTLOOK**

**DEMS-RSMC TROPICAL CYCLONES NEW DELHI DATED 16.09.2023**

**TROPICAL WEATHER OUTLOOK FOR NORTH INDIAN OCEAN (THE BAY OF BENGAL AND THE ARABIAN SEA) VALID FOR NEXT 168 HOURS ISSUED AT 0600 UTC OF 16.09.2023 BASED ON 0300 UTC OF 16.09.2023.**

**BAY OF BENGAL:**

YESTERDAY'S WELL MARKED LOW PRESSURE AREA OVER EAST MADHYA PRADESH & NEIGHBOURHOOD MOVED WEST-NORTHWESTWARDS OVER CENTRAL MADHYA PRADESH & NEIGHBOURHOOD AT 0000 UTC OF TODAY, THE 16TH SEPTEMBER, 2023. IT LAY OVER WESTCENTRAL MADHYA PRADESH & NEIGHBOURHOOD AT 0300 UTC OF TODAY. IT IS LIKELY TO MOVE WESTNORTHWESTWARDS ACROSS NORTHERN PARTS OF GUJARAT REGION & ADJOINING SOUTHEAST RAJASTHAN DURING NEXT 2 DAYS.

ASSOCIATED SCATTERED TO BROKEN LOW AND MEDIUM CLOUDS WITH EMBEDDED INTENSE TO VERY INTENSE CONVECTION LAY OVER WEST & CENTRAL MADHYA PRADESH EAST GUJARAT WEST VIDHARBHA EXTREME NORTH MADHYA MAHARASHTRA. MINIMUM CLOUD TOP TEMPERATURE IS MINUS 93 DEG CEL.

SCATTERED TO BROKEN LOW AND MEDIUM CLOUDS WITH EMBEDDED INTENSE TO VERY INTENSE CONVECTION LAY OVER EAST & SOUTHWEST BAY OF BENGAL AND ARAKAN COAST. SCATTERED LOW AND MEDIUM CLOUDS WITH EMBEDDED MODERATE TO INTENSE CONVECTION LAY OVER NORTHEAST BAY OF BENGAL, ANDAMAN SEA AND TENASSERIM COAST.

**PROBABILITY OF CYCLOGENESIS (FORMATION OF DEPRESSION) DURING NEXT 168 HRS:**

24 HOURS	24-48 HOURS	48-72 HOURS	72-96 HOURS	96-120 HOURS	120-144 HOURS	144-168 HOURS
NIL	NIL	NIL	NIL	NIL	NIL	NIL

**ARABIAN SEA:**

SCATTERED LOW AND MEDIUM CLOUDS WITH EMBEDDED MODERATE TO INTENSE CONVECTION LAY OVER GULF OF CAMBAY, SOUTHEAST & EASTCENTRAL ARABIAN SEA, LAKSHADWEEP ISLANDS AREA AND COMORIN AREA.

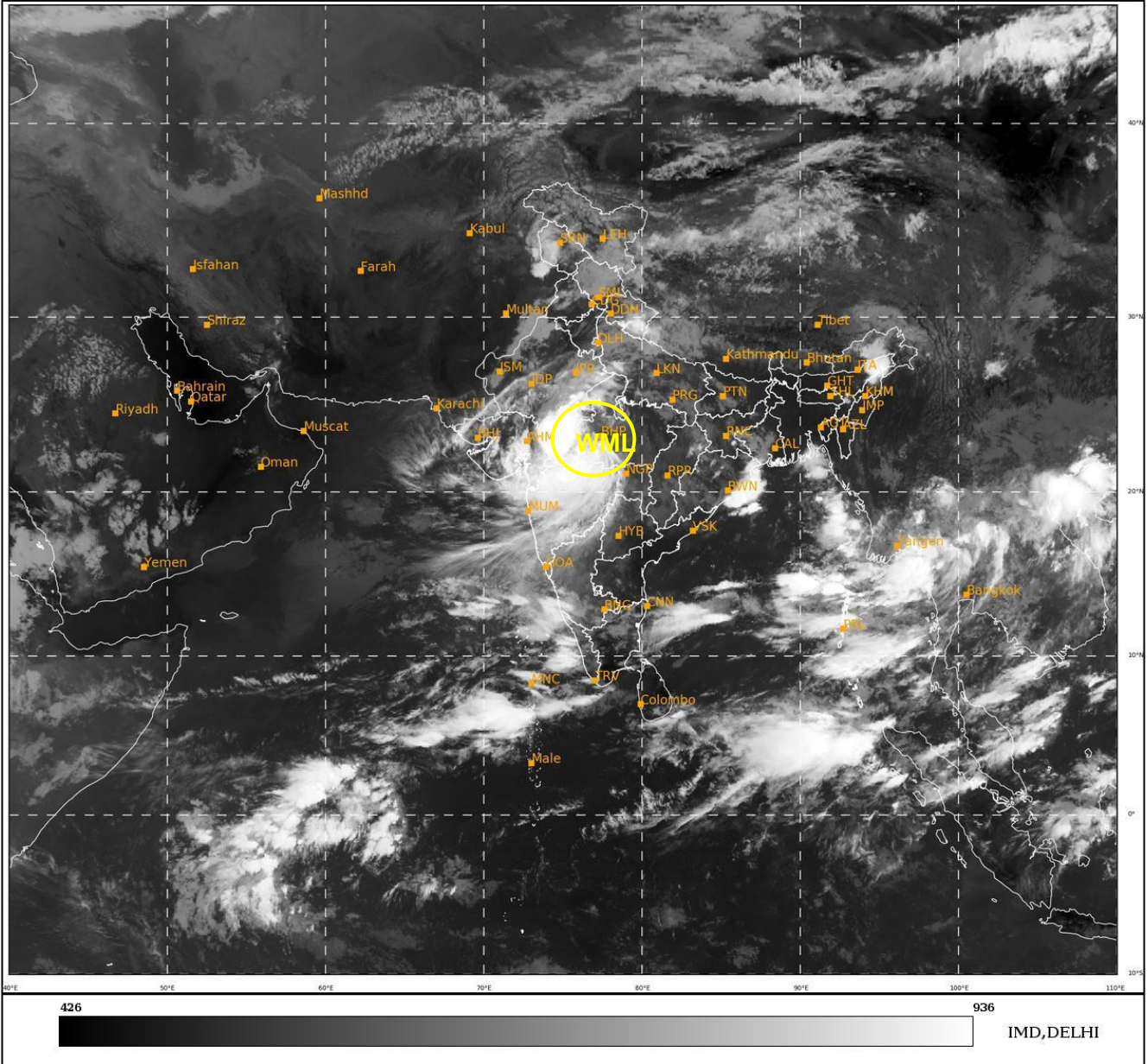
**PROBABILITY OF CYCLOGENESIS (FORMATION OF DEPRESSION) DURING NEXT 168 HRS:**

24 HOURS	24-48 HOURS	48-72 HOURS	72-96 HOURS	96-120 HOURS	120-144 HOURS	144-168 HOURS
NIL	NIL	NIL	NIL	NIL	NIL	NIL

**Remarks:** NIL

SAT : INSAT-3D IMG  
IMG\_TIR1 10.8 um  
LIC Mercator

16-09-2023/(0300 to 0327) GMT  
16-09-2023/(0830 to 0857) IST



WML: WELL MARKED LOW PRESSURE AREA

Cloud distribution: (a) Isolated: <25%, Scattered:25-50%, Broken: 51-75%, Solid:>75%, Convection Intensity: (a) Weak: Cloud Top Temperature (CTT) >-25°C, (b) Moderate: CTT: - 25°C to -40°C, (c) Intense: CTT: - 41°C to -70°C and (d) Very Intense: : Less than -70°C  
PROBABILITY OF CYCLOGENESIS (FORMATION OF DEPRESSION):NIL: 0%, LOW: 1-33%, , MODERATE: 34-66% AND HIGH: 67-100%  
This is a guidance Bulletin for WMO/ESCAP Panel Member countries. Visit respective National websites for Country specific Bulletins